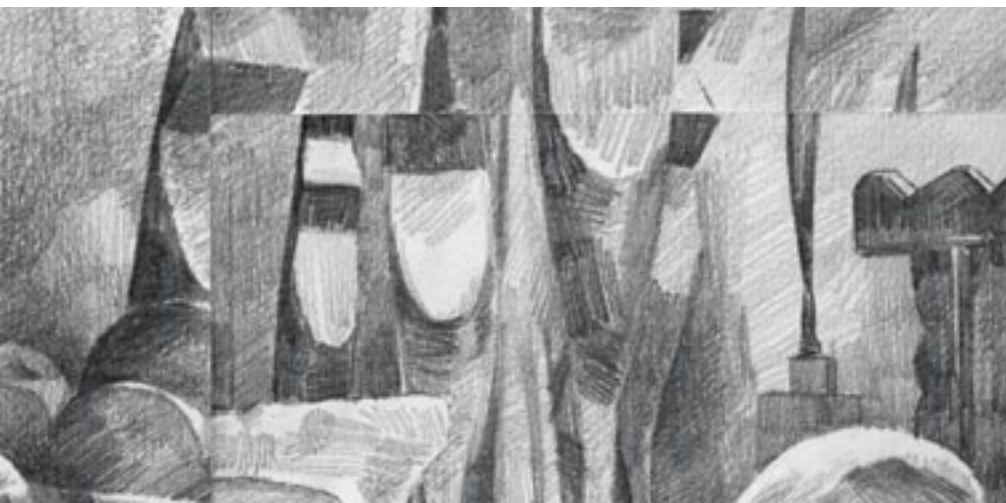


Brâncuși – an Artist without Frontiers
talk by art historian Doina Lemny

Art historian Doina Lemny, the author of the seminal book *Brancusi – an Artist without Frontiers* will complement the opening of the exhibition *Brâncuși: The Unknown Portrait* with an illuminating talk about the image the Romanian artist wished to create for posterity through photographic self-portraits and the photographic staging of his works.

Doina Lemny is a PhD art historian and a curator at the Musée National d'Art Moderne, Centre Pompidou. She published Brâncuși's archives in *L'Atelier Brancusi, La Collection* (Paris 1997), in *La Dation Brancusi: dessins et archives* (Paris, 2003), and Romanian correspondence and studio notes in *Brâncuși inedit* (Bucharest, Humanitas, 2004). She co-curated seven thematic exhibitions at Brancusi Studio Gallery from 1998 to 2002. She curated also exhibitions: *Antoine Pevsner dans les collections du Centre Pompidou* (2001), *La Dation Brancusi* (2003), *Henri Gaudier-Brzeska dans les collections du Centre Pompidou* (2009), and edited the catalogues. She is the author of: *Brancusi*, Paris, Oxus, 2005, *Brancusi & Gaudier-Brzeska: points de convergence* and *Henri Gaudier-Brzeska: Notes sur Liabeuf et Tolstoï*, Paris, L'Échoppe, 2009, *Lizica Codréano, une danseuse roumaine dans l'avant-garde parisienne*, Lyon, Fage, 2011, *Brancusi, au-delà de toutes les frontières*, Lyon, Fage, 2012, *Brancusi, col. Monographies*, Paris, Editions du Centre Pompidou, 2012, *Henri Gaudier-Brzeska, un sculpteur*, Lyon, Fage, 2015.

Cuts #2, 2016, pencil on paper, 30x40 cm, detail



Brâncuși: The Unknown Portrait

solo exhibition by Raluca Popa, curated by Simona Nastac
with a talk by art historian Doina Lemny

Preview: Tuesday 25 October, 6.30 – 8.30pm
12 Star Gallery, Europe House
32 Smith Square
London SW1P 3EU



Constantin Brâncuși (1876–1957) was one of the pioneering figures of modern sculpture and one of the most original artists of the twentieth-century. His serenely simplified sculptures *Bird in Space*, *M-Ile Pogany* or *Sleeping Muse* are unanimously recognised as icons of Modernism and, looking at his art now, it is almost impossible not to see him as a precursor to more recent work as diverse as that of Barbara Hepworth and Henry Moore, Anish Kapoor and Carl Andre, Donald Judd and Louise Bourgeois. He was a remarkably protean figure, also a close friend to leading avant-garde artists such as Amedeo Modigliani, Marcel Duchamp, Man Ray and Erik Satie, yet he remains one of the most elusive, with an aura of otherness still intriguing today.



Pairs (C.B.), 2016
pencil on paper, 35x55,8 cm, detail

Marking the 140th anniversary of the artist's birth, the exhibition *Brâncuși: The Unknown Portrait* by Raluca Popa aims to shed a new light on the Romanian-born modernist sculptor through a series of thought-provoking drawings that explore the potential within language and image to shape our perception of myth, reality, ideas on creative processes and construction of artistic subjectivity.

Using a wide range of sources, including two of the most relevant monographs ever written on Brâncuși, Sanda Miller's *Brancusi* (Reaktion Books, 2010) and Doina Lemny's *Brancusi – an Artist without Frontiers* (Noi Media Print, 2016), Popa (re)creates an oblique, layered portrait of the great artist, challenging herself to understand how his story was told. By filtering, subverting, erasing and overlaying Brâncuși's memories and traces, equally long-familiar and less known, she captures his compelling presence as it echoes through his correspondence, notes, photographs and footage of his studio, her delicate creations probing the precarious line between what is possible and what is not, as Brâncuși did in his search of the essence of things.

Raluca Popa (b. 1979) studied at Byam Shaw School of Art | CSM (London) and The University of Art and Design (Cluj). She lives and works in Bucharest. Her works have been presented in public and private institutions: Lateral ArtSpace, Fabrica de Pensule, Cluj; Guangdong Times Museum; Shed im Eisenwerk, Frauenfeld; Printmaking Gallery, Philadelphia; Rumănska Kulturinstitutet, Stockholm; Ivan Gallery, Bucharest; Museum of Applied Arts, Vienna; Tranzit.ro Bucharest; Galeria Plan B, Cluj; MNAC Bucharest; Salonul de Proiecte, Bucharest; Leopold Museum, Vienna.

The exhibition is curated by Simona Nastac, London-based curator and critic. She has curated group exhibitions and live events in London, Seoul, New York, Saint Petersburg, Prague, Cluj and Bucharest, that featured renowned artists Hito Steyerl, Guy Ben-Ner, Meekyoung Shin and Dan Perjovschi, amongst others. From 2006 to 2013 she was Head of Arts at the Romanian Cultural Institute in London. Her most recent exhibition *NeXus: Open Fusions* at the Museum of Art in Craiova, Romania, featured Brâncuși's first version of *The Kiss* (1907) from the museum's collection, alongside works and performances by Paul Neagu, Anish Kapoor, Tony Cragg and Nigel Rolfe.

Brâncuși: The Unknown Portrait is open between 26 October – 4 November 2016, Monday to Friday from 10am to 6pm. Free entry.